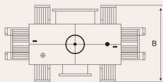
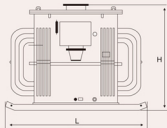


## 型号含义 Type meaning



## KS9系列油浸式矿用变压器 KS9 series oil immersed mining transformer

额定容量 Rated capacity (kVA)	电压组合(kV) Voltage group (kV)	联结方式 Vector group	阻抗电压(%) Impedance voltage	损耗(kW) Loss		空载电流(%) No-load current	重量(kg) Weight			外形尺寸(mm) (长L×宽B×高H) Outline dimension
				空载 No-load	负载(75°C) Load		器身重 Body	油重 Oil	总重 Total	
50	高压(HV) 10	Yyo-d11	4	0.17	0.87	2.0	230	80	390	1200X950X900
80				0.25	1.25	1.8	310	100	530	1300X950X950
100				0.29	1.50	1.6	360	110	600	1300X950X1000
125				0.34	1.80	1.5	425	120	690	1300X950X1000
160				0.40	2.20	1.4	480	140	810	1350X950X1040
200	6		0.48	2.60	1.3	580	170	955	1400X970X1080	
250	低压(LV)		0.56	3.05	1.2	670	180	1100	1450X1000X1100	
315	0.693/0.4		0.67	3.65	1.1	775	240	1305	1500X1000X1150	
400			0.80	4.30	1.0	940	280	1570	1600X1050X1150	
500			0.96	5.10	1.0	1155	300	1970	1650X1050X1200	
630		1.20	6.20	0.9	1310	345	2150	1650X1120X1220		