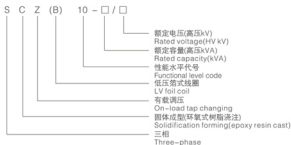


型号含义 Type meaning



产品标准 Product standard

GB/T 10228-1997 GB6450-1986
JB/T 10088-2004 GB4208-1993

额定高压 Rated HV:
10(11, 10.5, 6.6, 6.3, 6)kV

额定低压 Rated LV:
0.4kV

有载调压范围 on-load regulation range:
($\pm 4 \times 2.5\%$)或($\pm 3 \times 2.5\%$)

10kV级SCZ(B)10系列有载调压树脂绝缘干式变压器技术参数

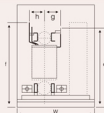
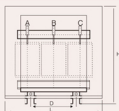
Tech data of 10kV SCZ(B) 10 series resin insulation dry type power transformer

| 额定容量 Rated capacity (kVA) | 电压组合(kv) Voltage group | 联结方式 Vector group | 损耗(kW) Loss | | 空载电流(%) No-load Current | 阻抗电压(%) Impedance voltage | 绝缘等级 Insulating level | 重量(kg) Weight |
|---------------------------------|---------------------------|----------------------|----------------|-------------------|----------------------------|------------------------------|--------------------------|------------------|
| | | | 空载 No-load | 负载(120°C) Load | | | | |
| 200 | 高压(HV) | Dyn11 或 Yyn0 | 0.690 | 2.660 | 1.6 | 4 | F/F | 1180 |
| 250 | | | 0.790 | 2.900 | 1.6 | | | 1290 |
| 315 | | | 0.970 | 3.610 | 1.4 | | | 1430 |
| 400 | | | 1.080 | 4.240 | 1.4 | 1700 | | |
| 500 | | | 1.280 | 5.150 | 1.4 | 1880 | | |
| 630 | | | 1.475 | 6.270 | 1.2 | 2150 | | |
| 800 | 11 | | 1.670 | 7.400 | 1.2 | 6 | | 2540 |
| 1000 | 10.5 | | 1.950 | 8.760 | 1.1 | | | 2950 |
| 1250 | 6.3 | | 2.300 | 10.54 | 1.1 | | | 3380 |
| 1600 | 6 | | 2.700 | 12.41 | 1.1 | | | 3990 |
| 2000 | 6 | | 3.680 | 15.22 | 1.0 | | | 4400 |
| 2500 | 0.4 | | 4.400 | 18.10 | 1.0 | | | 5060 |
| 3150 | 低压(LV) | 5.650 | 23.63 | 0.8 | 8 | 6050 | | |
| 4000 | | 6.560 | 28.35 | 0.8 | | 7350 | | |

外形尺寸 Outline dimension

SCZ(B)10-□-□/10.04
外形尺寸图

Outline dimension of SCZ(B)
10-□-□10-0.4



型号含义

Type meaning



产品标准

Product standard

GB/T10228-2008 GB1094.11-2007 JB/T10088-2004 GB4208-2008

额定高压 Rated HV: 10(11, 10.5, 6.6, 6.3, 6)kV

联结组别 Vector group: Dyn11或Yyn0

绝缘水平 Insulating level: LI 75AC35/LI 0AC5

额定低压 Rated LV: 0.4kV

高压分接范围 Tapping range of HV: $\pm 5\%$ 或 $\pm 2 \times 2.5\%$

频率 Frequency: 50Hz

10kV级SC(B)10系列树脂绝缘干式变压器技术参数

Tech data of 10kV SC(B) 10series resin insulation dry type power transformer

| 额定容量 Rated capacity (kVA) | 电压组合(kv) Voltage group | 联结方式 Vector group | 损耗(kW) Loss | | 空载电流(%) No-load current | 阻抗电压(%) Impedance voltage | 绝缘等级 Insulating level | 重量(kg) Weight |
|---------------------------------|---------------------------|----------------------|----------------|-------------------|----------------------------|------------------------------|--------------------------|------------------|
| | | | 空载 No-load | 负载(120°C) Load | | | | |
| 30 | 高压(HV) | Dyn11 或 Yyn0 | 0.190 | 0.710 | 2.6 | 4 | F/F | 330 |
| 50 | | | 0.270 | 1.000 | 2.2 | | | 380 |
| 80 | | | 0.370 | 1.380 | 2.2 | | | 510 |
| 100 | | | 0.400 | 1.570 | 2.0 | | | 590 |
| 125 | | | 0.470 | 1.850 | 1.8 | | | 650 |
| 160 | | | 0.540 | 2.130 | 1.8 | | | 780 |
| 200 | | | 0.620 | 2.530 | 1.6 | | | 930 |
| 250 | | | 0.720 | 2.760 | 1.6 | | | 1040 |
| 315 | | | 0.880 | 3.470 | 1.4 | | | 1180 |
| 400 | | | 0.980 | 3.990 | 1.4 | | | 1450 |
| 500 | 低压(LV) | Dyn11 或 Yyn0 | 1.160 | 4.880 | 1.4 | 6 | F/F | 1630 |
| 630 | | | 1.340 | 5.880 | 1.2 | | | 1900 |
| 630 | | | 1.300 | 5.960 | 1.2 | | | 1900 |
| 800 | | | 1.520 | 6.960 | 1.2 | | | 2290 |
| 1000 | | | 1.770 | 8.130 | 1.1 | | | 2700 |
| 1250 | | | 2.090 | 9.690 | 1.1 | | | 3130 |
| 1600 | | | 2.450 | 11.730 | 1.1 | | | 3740 |
| 2000 | | | 3.050 | 14.450 | 1.0 | | | 4150 |
| 2500 | | | 3.600 | 17.170 | 1.0 | | | 4810 |

型号含义 Type meaning



产品标准 Product standard

GB/T10228-2008 GB1094.11-2007 JB/T10088-2004 GB4208-2008

额定高压 Rated HV: 10(11, 10.5, 6.6, 6.3, 6)kV

联结组别 Vector group: Dyn11或Yyn0

绝缘水平 Insulating level: LI 75AC35/LI 0AC5

额定低压 Rated HV: 0.4kV

高压分接范围 Tapping range of HV: $\pm 5\%$ 或 $\pm 2 \times 2.5\%$

频率 Frequency: 50Hz

10kV级SC(B)9系列树脂绝缘干式变压器技术参数

Tech data of 10kV SC(B) 9series resin insulation dry type power transformer

| 额定容量 Rated capacity (kVA) | 电压组合(kV) Voltage group | 联结方式 Vector group | 损耗(kW) Loss | | 空载电流(%) No-load current | 阻抗电压(%) Impedance voltage | 绝缘等级 insulating level | 重量(kg) Weight |
|---------------------------------|---------------------------|----------------------|----------------|-------------------|----------------------------|------------------------------|--------------------------|------------------|
| | | | 空载 No-load | 负载(120°C) Load | | | | |
| 30 | 高压(HV) | Dyn11 或 Yyn0 | 0.220 | 0.750 | 3.2 | 4 | F/F | 330 |
| 50 | | | 0.310 | 1.060 | 2.8 | | | 380 |
| 80 | | | 0.420 | 1.460 | 2.6 | | | 510 |
| 100 | | | 0.450 | 1.670 | 2.4 | | | 590 |
| 125 | | | 0.530 | 1.960 | 2.2 | | | 650 |
| 160 | | | 0.610 | 2.250 | 2.2 | | | 780 |
| 200 | | | 0.700 | 2.680 | 2.0 | | | 930 |
| 250 | | | 0.810 | 2.920 | 2.0 | | | 1040 |
| 315 | | | 0.990 | 3.670 | 1.8 | | | 1180 |
| 400 | | | 1.100 | 4.220 | 1.8 | | | 1450 |
| 500 | 低压(LV) | Dyn11 或 Yyn0 | 1.310 | 5.170 | 1.8 | 6 | F/F | 1630 |
| 630 | | | 1.510 | 6.220 | 1.6 | | | 1900 |
| 630 | | | 1.460 | 6.310 | 1.6 | | | 1900 |
| 800 | | | 1.710 | 7.380 | 1.6 | | | 2290 |
| 1000 | | | 1.990 | 8.610 | 1.4 | | | 2700 |
| 1250 | | | 2.350 | 10.260 | 1.4 | | | 3130 |
| 1600 | | | 2.750 | 12.400 | 1.4 | | | 3740 |
| 2000 | | | 3.400 | 15.300 | 1.2 | | | 4150 |
| 2500 | | | 4.000 | 18.180 | 1.2 | | | 4810 |